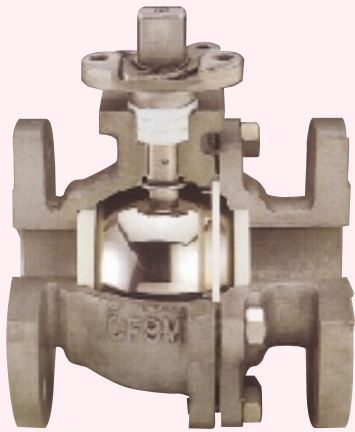




ISO 9001

SERIES 93



**SPLIT BODY FLANGED BALL VALVES
FULL BORE 5" TO 12" (DN 125 TO DN 300)**

DESIGN ADVANTAGES

- SAND CAST BODY CONSTRUCTION
- ISO 5211 MOUNTING PAD
- HIGH CYCLE STEM SEALS
- ANTI-STATIC DEVICE AS STANDARD
- ALL BODIES AND ENDS IDENTIFIED BY MELT NUMBERS.
- BLOW OUT PROOF STEM
- FIRE SAFE TO API 607 AND BS6755 OPTIONAL
- WIDE RANG OF SEAT AND SEAL MATERIALS AVAILABLE.

STANDARDS

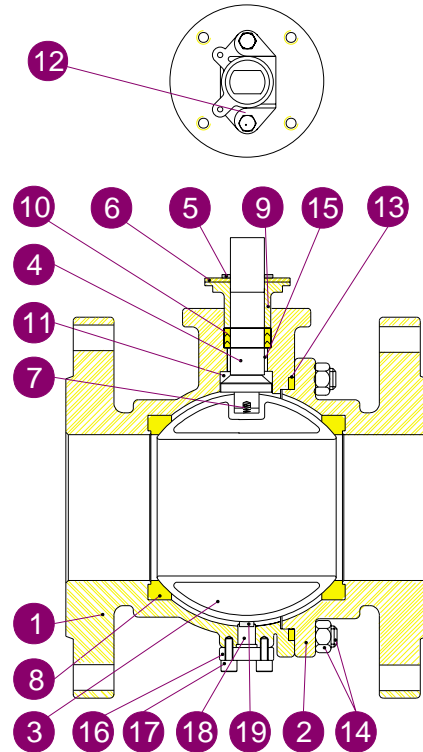
Design : ANSI B16.34, BS5351, DIN 3337
 Face to face : ANSI B16.10, DIN 3202 F1, F4 / F5
 Flange dimensions : ANSI B16.5
 DIN 2632/2633 & DIN 2634/2635
 Pipeline valves : API 6D
 Pressure testing : API 598
 Fire testing : API 607 4th Edition, BS6755
 Mounting pad : ISO 5211
 Marking system for valves : MSS SP-25
 Material Certification : EN 10204 / DIN 50.049-3.1B
 Quality Assurance : ISO 9001

VALVE RATING AND FIG. NO.:

FIG. 93-10 ANSI CLASS 150#
 FIG. 93-20 ANSI CLASS 300#
 FIG. 93-30 DIN PN 10/16 (DIN 3202 F1)
 FIG. 93-40 DIN PN 10/16 (DIN 3202 F4/F5)
 FIG. 93-50 DIN PN 25/40 (DIN 3202 F1)
 FIG. 93-60 DIN PN 25/40 (DIN 3202 F4/F5)

SPECIFICATIONS

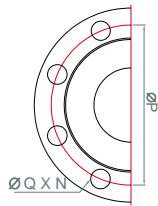
Construction : Two-Piece Body, Full Bore
 Size : 5" to 12" (DN 125 to DN 300)
 Body : CF8M, WCB / DIN 1.4408, 1.0619
 Ball and Stem : 316 S.S. / 304 S.S.
 Seat : Reinforced PTFE



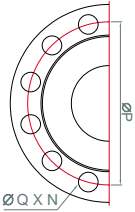
MATERIALS LIST

NO.	PART NAME	MATERIAL		Q'TY
		Stainless Steel	Carbon Steel	
1	Body	ASTM A351 Gr. CF8M	ASTM A216 Gr. WCB	1
2	Cap	ASTM A351 Gr. CF8M	ASTM A216 Gr. WCB	1
3	Ball	ASTM A351 Gr. CF8M	ASTM A351 Gr. CF8	1
4	Stem	SUS316	SUS304	1
5	C Retainer Ring	SUS 301	SUS 301	1
6	Stopper	SUS 304	SUS304	1
7	Anti-static Spring	SUS 304	SUS 304	1
8	Seat	RPTFE	RPTFE	2
9	Bonnet Cap	SUS 304	SUS 304	1
10	V-Ring Packing	PTFE	PTFE	3
11	Stem Seal	PTFE	PTFE	1
12	Bonnet Cap Bolt	SUS 304	SUS 304	2
13	Joint Gasket	PTFE	PTFE	1
14	Stud & Nut	SUS 304	S45C	§
15	Bearing	PTFE	PTFE	1
*16	Bottom Cap	SUS 316	SUS 316	1
*17	3/8" Bolt	SUS 304	SUS 304	6
*18	Trunnion Bearing	SUS 316	SUS 316	1
*19	Bottom Seat	f	f	1

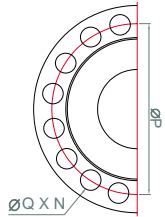
f 50% Stainless steel powder filled PTFE
§ For 5"~8" Class 150 & 300 - 8 pairs of stud and nut
 For 10"~12" Class 150 & 300 - 12 pairs of stud and nut
 For 5"~6" PN10/16 & PN25/40 - 8 pairs of stud and nut
 For 8"~12" PN10/16 - 12 pairs of stud and nut
 For 8"~10" PN25/40 - 12 pairs of stud and nut
 For 12" PN25/40 - 16 pairs of stud and nut
 * Apply to 10" (DN250) and 12" (DN300) valve only



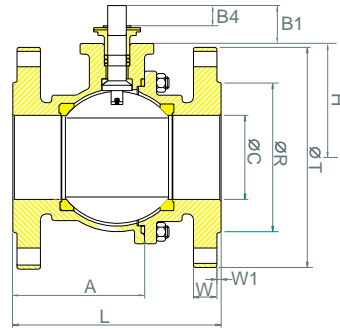
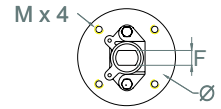
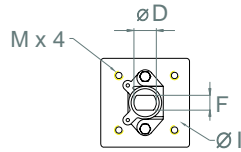
For ANSI 150/300# - 5" (DN125) - 8" (DN200)
For PN10/16 - 5" (DN125) - 6" (DN150)
For PN25/40 - 5" (DN125) - 6" (DN150)



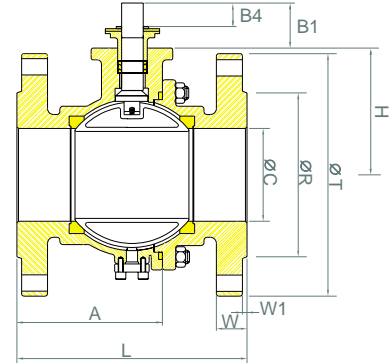
For ANSI 150/300# - 10" (DN250) & 12" (DN300)
For PN10/16 - 8" (DN200) - 12" (DN300)
For PN25/40 - 8" (DN200) - 10" (DN250)



12" (DN300)
Flange
For PN25/40 - 12" (DN300)



5"-6" (Solid Ball)
8"-12" (Cored Cavity Ball)



DIMENSIONS (mm)

SERIES 93-10/20

SIZE	A	B1	*B1	H	*H	B4	*B4	ØC	*ØC	ØD	F	ØI	L	*L	M	N	ØP	*ØP	ØQ	*ØQ	ØR	ØT	*ØT	W	*W	W1	W(Kg)	*W(Kg)	ISO5211
5"	185	50	50	155	155	30	30	127	127	29.5	17	102	356	381	7/16"	8	215.9	235.0	22	22.2	186	254	279	24.0	35.5	1.6	54	70	F10
6"	217	67	55	168	196	40	25	152.4	151	34	23	125	394	403	1/2"	8	241.5	270.0	22	22.2	216	279	318	25.4	36.6	1.6	76	90	F12
8"	262	61	72	225	253	32	41	203.2	201	34	23	125	457	502	1/2"	8	298.5	330.0	22	22.2	270	343	381	28.6	41.3	1.6	105	150	F12
10"	335	87	85	265	275	36	40	250	252	50	30	125	533	568	1/2"	12	362.0	387.5	25	25.4	324	406	444	30.8	47.7	1.6	195	200	F12
12"	403	85	90	326	330	38	40	300	302	50	30	125	610	648	1/2"	12	432.0	451.0	25	25.4	381	483	521	31.8	50.8	1.6	250	280	F12

* Dimension for ANSI Class 300

SERIES 93-30/40

SIZE	H	B1	B4	ØC	ØD	F	ØI	*L	*L	M	N	*N	ØP	*ØP	ØQ	*ØQ	ØR	*ØR	ØT	*ØT	W	*W	W1	W(Kg)	*W(Kg)	ISO5211
5"	153	50	30	125	29.5	17	102	325	400	M12	8	8	210	210	18	18	188	188	250	250	22	22	3	54	70	F10
6"	178	58	28	150	34.0	23	125	350	480	M12	8	8	240	240	23	23	212	212	285	385	22	22	3	76	90	F12
8"	236	55	24	201	34.0	23	125	400	600	M12	12	12	295	295	23	23	268	268	340	340	24	24	3	105	150	F12
10"	275	82	42	251	50.0	30	125	450	730	M16	12	12	355	355	27	27	320	320	405	405	26	26	3	195	200	F12
12"	310	95	46	300	50.0	30	125	500	850	M16	12	12	410	410	27	27	378	378	460	460	28	28	4	250	280	F12

* Dimension for PN16 ◆ Dimension for F1 ◆ Dimension for F5

SERIES 93-50/60

SIZE	H	B1	B4	ØC	ØD	F	ØI	*L	*L	M	N	ØP	*ØP	ØQ	*ØQ	ØR	*ØR	ØT	*ØT	W	*W	W1	W(Kg)	*W(Kg)	ISO5211
5"	155	50	28	125	29.5	17	102	325	400	M12	8	220	220	27	27	188	188	270	270	26	26	3	54	70	F10
6"	175	62	33	150	34	23	125	350	480	M12	8	250	250	27	27	218	218	300	300	28	28	3	76	90	F12
8"	240	74	40	201	34	23	125	400	600	M12	12	320	320	30	30	285	285	375	375	34	34	3	105	150	F12
10"	285	90	48	251	50	30	125	450	730	M16	12	385	385	33	33	345	345	450	450	38	38	3	195	200	F12
12"	321	95	48	300	50	30	125	500	850	M16	16	450	450	33	33	410	410	515	515	42	42	4	250	280	F12

* Dimension for PN40 ◆ Dimension for F1 ◆ Dimension for F5

HOW TO ORDER

93-10

16

S

R

VALVE TYPE		SIZE		BODY MATERIAL		SEAT	
FIG. 93-10	ANSI 150#	12	5" - DN 125	S	CF8M	P	PTFE
FIG. 93-20	ANSI 300#	13	6" - DN 150	W	WCB	R	R-PTFE
FIG. 93-30	PN 10/16 F1	14	8" - DN 200	F	304 S.S.	S	50/50 S.S. filled PTFE
FIG. 93-40	PN 10/16 F4/F5	15	10" - DN 250	L	316L S.S.	C	Carbon filled PTFE
FIG. 93-50	PN 25/40 F1	16	12" - DN 300			M	MG1241
FIG. 93-60	PN 25/40 F4/F5					D	Delrin
						U	UHMWPE



MARS VALVE CO.,LTD.
7F-6, NO.200, SEC.4, WEN-SHIN ROAD
TAICHUNG, TAIWAN, R.O.C.
TEL:++886-4-297 3808
FAX:++886-4-297 3608
E-MAIL:mars@marsvalve.com.tw
<http://www.marsvalve.com.tw/>

Distributor: